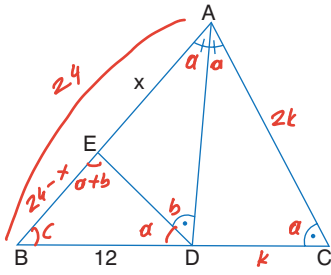


1.



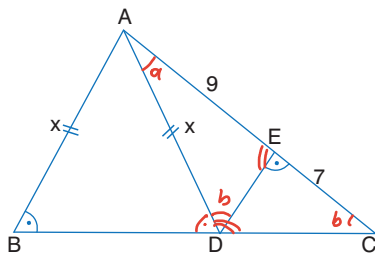
[AD],  $\widehat{ABC}$ 'nin  
açıortayı  
 $m(\widehat{ADE})=m(\widehat{ACB})$   
 $|AC|=2|DC|$   
 $|BD|=12$  cm

Yukarıdaki verilere göre,  $|AE|=x$  kaç cm'dir?

- A) 9 B) 12 C) 16 **D) 18** E) 20

$$\triangle BED \sim \triangle BDA \Rightarrow \frac{12}{24-x} = \frac{24-x}{12} \quad x=18$$

2.



ABC üçgen  
 $|AB|=|AD|$   
 $|AE|=9$  cm  
 $|EC|=7$  cm

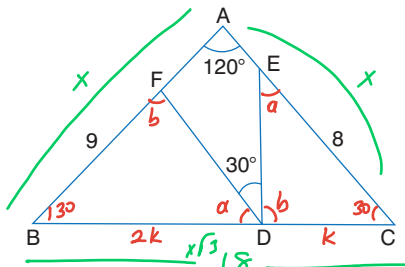
$$m(\widehat{ABC})=m(\widehat{DEC})$$

Yukarıdaki verilere göre,  $|AB|=|AD|$  kaç cm'dir?

- A)  $3\sqrt{7}$  B) 8 C)  $6\sqrt{2}$  D) 10 **E) 12**

$$\triangle ADE \sim \triangle ACD \Rightarrow \frac{x}{16} = \frac{9}{x} \quad x=12$$

3.



$|AB|=|AC|$   
 $m(\widehat{BAC})=120^\circ$   
 $m(\widehat{EDF})=30^\circ$   
 $|BF|=9$  cm  
 $|EC|=8$  cm  
 $|BD|=2|DC|$

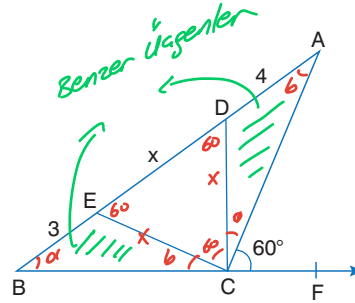
Yukarıdaki verilere göre,  $|AB|$  kaç cm'dir?

- A)  $6\sqrt{3}$**  B) 12 C)  $8\sqrt{3}$  D) 15 E)  $9\sqrt{3}$

$$\frac{2k}{8} = \frac{9}{k} \quad x\sqrt{3}=18 \quad x=6\sqrt{3}$$

1-D 2-E 3-A

4.



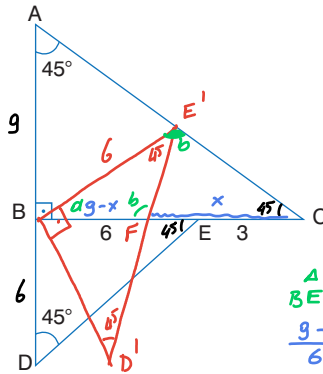
B, F, C doğrusal  
 $m(\widehat{ACF})=60^\circ$   
C, D, E eşkenar  
üçgen  
 $|AD|=4$  cm  
 $|BE|=3$  cm

Yukarıdaki verilere göre,  $|DE|=x$  kaç cm'dir?

- A) 3 **B)  $2\sqrt{3}$**  C) 4 D) 5 E)  $3\sqrt{3}$

$$\frac{3}{x} = \frac{x}{4} \quad x=2\sqrt{3}$$

5.



ABC ve BDE  
ikizkenar dik üçgen  
 $m(\widehat{DAC})=45^\circ$   
 $m(\widehat{ADE})=45^\circ$   
 $|BE|=2|EC|=6$  cm

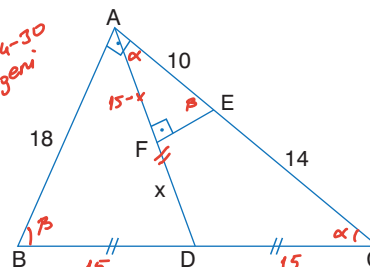
$$\triangle BE'F \sim \triangle CE'E' \quad \frac{9-x}{6} = \frac{6}{9} \quad 81-9x=36 \quad 45=9x \quad 5=x$$

BDE üçgeni B köşesi etrafında pozitif yönde bir miktar döndürüldüğünde E köşesi [AC] üzerine gelmektedir.

Dönme sonucu [DE] ile [BC] kenarlarının kesişim noktası F olduğuna göre,  $|FC|$  kaç cm'dir?

- A) 3 B)  $2\sqrt{3}$  C) 4 **D) 5** E)  $3\sqrt{3}$

6.



ABC dik üçgen  
[AD] kenarortay  
 $[EF] \perp [AD]$   
 $|AE|=10$  cm  
 $|EC|=14$  cm  
 $|AB|=18$  cm

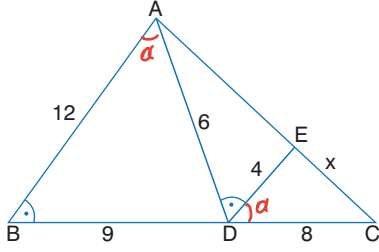
Yukarıdaki verilere göre,  $|FD|=x$  kaç cm'dir?

- A) 4 B) 5 C) 6 **D) 7** E) 8

$$\frac{15-x}{24} = \frac{10}{30} \quad x=7$$

4-A 5-D 6-D

7.



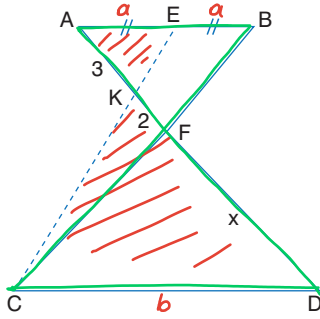
$m(\widehat{ABC}) = m(\widehat{ADE})$   
 $|AB| = 2|AD| = 12\text{ cm}$   
 $|DC| = 2|DE| = 8\text{ cm}$   
 $|BD| = 9\text{ cm}$

*Kenar-Açı-Kenar Benzer.*  
 $\frac{4}{6} = \frac{8}{12} = \frac{x}{9} \quad x=6$

Yukarıdaki verilere göre,  $|EC| = x$  kaç cm'dir?

- A) 4,5    B) 5    **C) 6**    D) 6,5    E) 7

8.



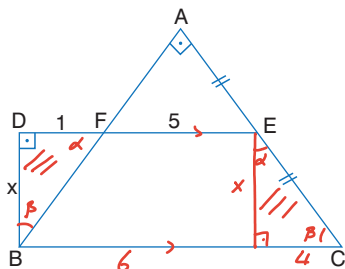
$|AB| \parallel |CD|$   
 $|AD| \cap |BC| = \{F\}$   
 $|AD| \cap |EC| = \{K\}$   
 $|AE| = |EB|$   
 $|AK| = 3\text{ cm}$   
 $|KF| = 2\text{ cm}$

Yukarıdaki verilere göre,  $|FD| = x$  kaç cm'dir?

- A) 4    B) 6    C) 8    D) 9    **E) 10**

1)  $\frac{a}{b} = \frac{3}{2+x}$     2)  $\frac{2a}{b} = \frac{5}{x}$   
 $\frac{3}{2+x} = \frac{5}{2x}$      $\frac{5}{2x} = \frac{6}{10+5x}$   
 $6x = 10 + 5x$   
 $x = 10$

9.



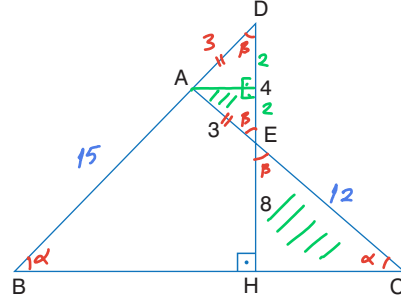
ABC dik üçgen  
 $|BD| \perp |DE|$   
 $|DE| \parallel |BC|$   
 $|DF| = 1\text{ cm}$   
 $|EF| = 5\text{ cm}$   
 $|AE| = |EC|$

Yukarıdaki verilere göre,  $|BD| = x$  kaç cm'dir?

- A)  $\sqrt{3}$     **B) 2**    C)  $\sqrt{5}$     D)  $\sqrt{6}$     E) 3

$\frac{x}{4} = \frac{1}{x} \quad x=2$

10.



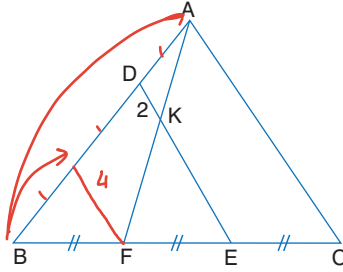
$[DH] \perp [BC]$   
 $|AB| = |AC|$   
 $|DE| = 4\text{ cm}$   
 $|EH| = 8\text{ cm}$   
 $|AE| = 3\text{ cm}$

Yukarıdaki verilere göre,  $|BD|$  kaç cm'dir?

- A) 25    B) 24    C) 20    **D) 18**    E) 15

$\frac{2}{8} = \frac{3}{|EC|} \quad |EC| = 12$

11.



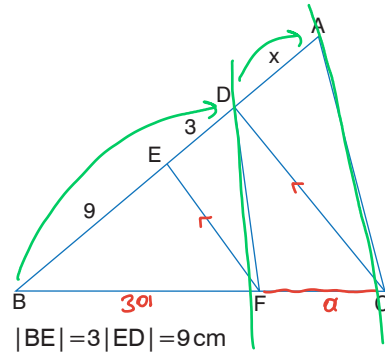
ABC üçgen  
 $[DE] \cap [AF] = \{K\}$   
 $[DE] \parallel [AC]$   
 $|BF| = |EF| = |EC|$   
 $|DK| = 2\text{ cm}$

Yukarıdaki verilere göre,  $|AC|$  kaç cm'dir?

- A) 6    B) 8    C) 10    **D) 12**    E) 14

$\frac{1}{3} = \frac{4}{|AC|} \quad |AC| = 12$

12.



ABC üçgen  
 $[DF] \parallel [AC]$   
 $[EF] \parallel [DC]$

$\frac{12}{x} = \frac{3a}{a}$   
 $x=4$

Yukarıdaki verilere göre,  $|AD| = x$  kaç cm'dir?

- A) 1    B) 2    C) 3    **D) 4**    E) 5