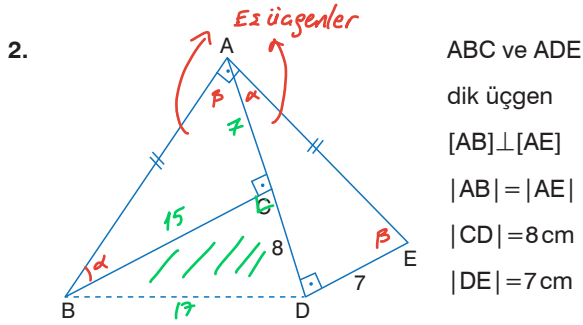


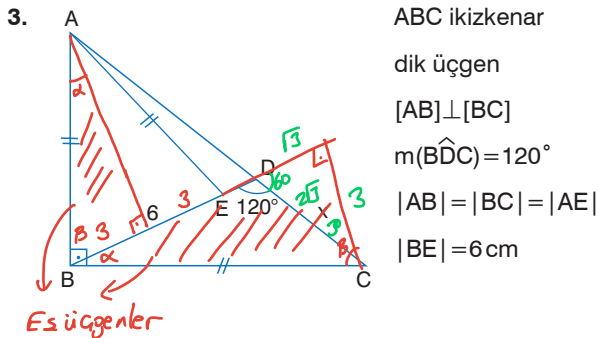
Yukarıdaki verilere göre, $|BD|$ kaç cm'dir?

- A) 10 B) $5\sqrt{5}$ C) 12 D) 13 E) 15



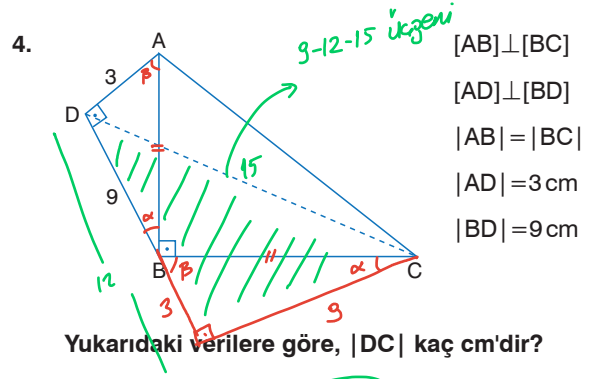
Yukarıdaki verilere göre, $|BD|$ kaç cm'dir?

- A) 10 B) $8\sqrt{2}$ C) 15 D) $8\sqrt{5}$ E) 17



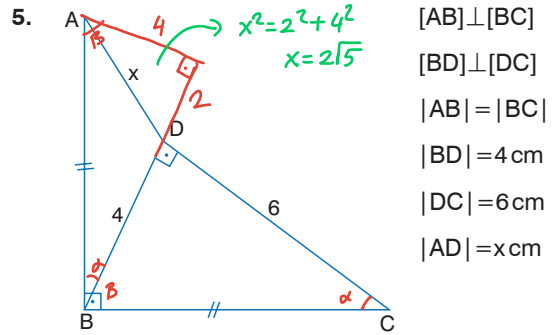
Yukarıdaki verilere göre, $|DC| = x$ kaç cm'dir?

- A) $\sqrt{3}$ B) 3 C) $2\sqrt{3}$ D) 6 E) $6\sqrt{3}$



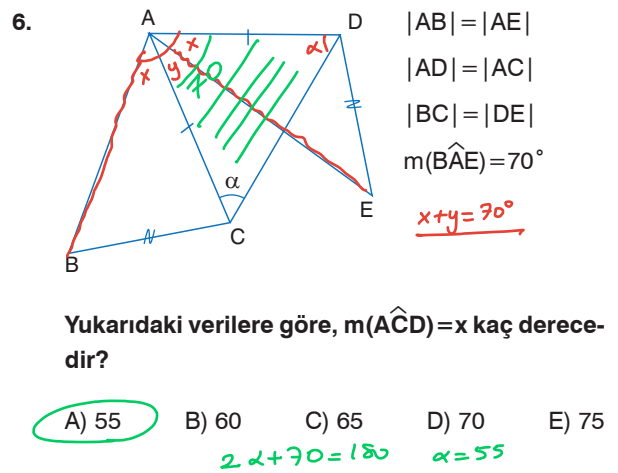
Yukarıdaki verilere göre, $|DC|$ kaç cm'dir?

- A) 10 B) 13 C) 15 D) 17 E) 20



Yukarıdaki verilere göre, $|AD| = x$ kaç cm'dir?

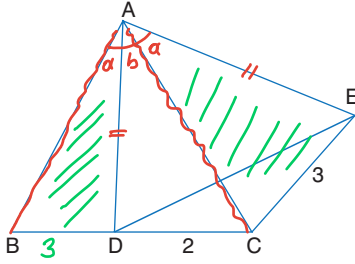
- A) 4 B) $2\sqrt{5}$ C) 5 D) 6 E) 10



Yukarıdaki verilere göre, $m(\widehat{ACD}) = x$ kaç derecedir?

- A) 55 B) 60 C) 65 D) 70 E) 75

7.



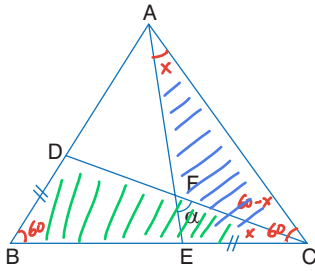
ABC ve ADE
eşkenar üçgen
 $|DC|=2\text{cm}$
 $|EC|=3\text{cm}$
 $\alpha + \beta = 60^\circ$

Yukarıdaki verilere göre, $\widehat{C}(ABC)$ kaç cm'dir?

- A) 9 B) 12 C) 15 D) 18 E) 21

$G = 5 \times 3 = 15 //$

8.



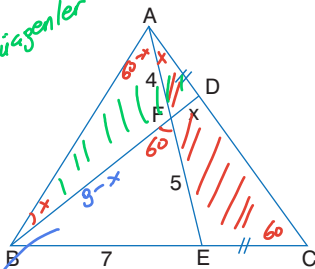
ABC eşkenar üçgen
 $[AE] \cap [CD] = \{F\}$
 $|BD| = |EC|$
Toralı üçgenler
estir.
 $\alpha = x + 60 - x$
 $\alpha = 60$

Yukarıdaki verilere göre, $m(\widehat{EFC}) = x$ kaç derecedir?

- A) 30 B) 45 C) 60 D) 75 E) 90

9.

Toralı üçgenler
estir.



ABC eşkenar üçgen
 $[AE] \cap [BD] = \{F\}$
 $|AD| = |EC|$
 $|AF| = 4\text{cm}$
 $|EF| = 5\text{cm}$
 $|BE| = 7\text{cm}$

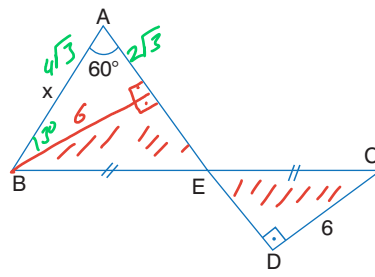
Yukarıdaki verilere göre, $|DF| = x$ kaç cm'dir?

- A) 1 B) $\frac{3}{2}$ C) 2 D) $\frac{5}{2}$ E) 3

Kosinüs teoremi:

$z^2 = 5^2 + (9-x)^2 - 2 \cdot (5) \cdot (9-x) \cdot \cos 60$
 $x = 1$

10.

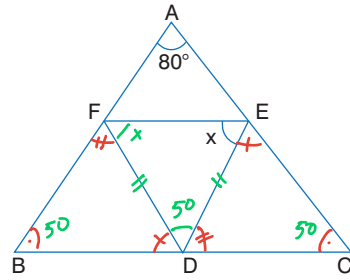


$[AD] \perp [DC]$
 $m(\widehat{BAD}) = 60^\circ$
 $|BE| = |EC|$
 $|DC| = 6\text{cm}$

Yukarıdaki verilere göre, $|AB| = x$ kaç cm'dir?

- A) $2\sqrt{3}$ B) 3 C) $3\sqrt{3}$ D) 6 E) $4\sqrt{3}$

11.

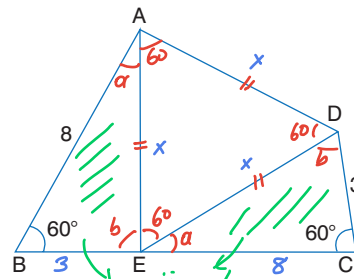


$\widehat{BDF} \cong \widehat{CED}$
 $|AB| = |AC|$
 $m(\widehat{BAC}) = 80^\circ$
 $180 - 80 = 100$
 $100 : 2 = 50$
 $50 + 2x = 180$
 $x = 65$

Yukarıdaki verilere göre, $m(\widehat{DEF}) = x$ kaç derecedir?

- A) 40 B) 50 C) 55 D) 60 E) 65

12.



ADE eşkenar
üçgen
 $|AB| = 8\text{cm}$
 $|DC| = 3\text{cm}$

$m(\widehat{ABC}) = m(\widehat{DCE}) = 60^\circ$

Kosinüs teoremi: $x^2 = 3^2 + 8^2 - 2 \cdot 3 \cdot 8 \cdot \cos 60$
 $x = 7$
 $G = 7 \times 3 = 21$

Yukarıdaki verilere göre, $\widehat{C}(ADE)$ kaç cm'dir?

- A) 18 B) 21 C) 30 D) 33 E) 36