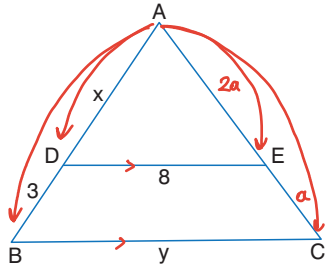


1.



ABC üçgen  
 $[DE] \parallel [BC]$   
 $|AE| = 2|EC|$   
 $|AD| = x \text{ cm}$   
 $|BC| = y \text{ cm}$   
 $|BD| = 3 \text{ cm}$   
 $|ED| = 8 \text{ cm}$

Yukarıdaki verilere göre,  $x+y$  toplamı kaçtır?

- A) 18 B) 20 C) 22 D) 24 E) 26

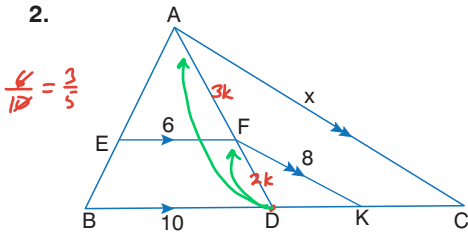
$$\frac{x}{x+3} = \frac{2a}{3a} = \frac{8}{y}$$

$$3x = 2x + 6 \Rightarrow x = 6$$

$$2y = 24 \Rightarrow y = 12$$

$$x + y = 6 + 12 = 18$$

2.



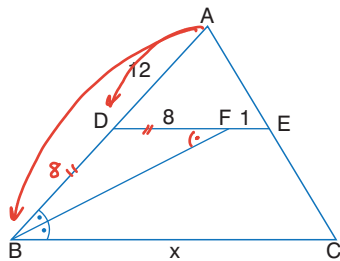
ABC üçgen  
 $[EF] \parallel [BC]$   
 $[FK] \parallel [AC]$   
 $|EF| = 6 \text{ cm}$   
 $|BD| = 10 \text{ cm}$   
 $|FK| = 8 \text{ cm}$

Yukarıdaki verilere göre,  $|AC| = x$  kaç cm'dir?

- A) 12 B) 16 C) 18 D) 20 E) 24

$$\frac{2k}{10} = \frac{3k}{x} \Rightarrow x = 20$$

3.



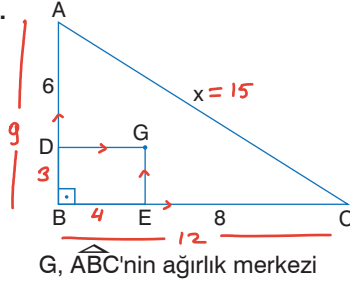
ABC üçgen  
 $[DE] \parallel [BC]$   
 $[BF]$  açıortay  
 $|AD| = 12 \text{ cm}$   
 $|DF| = 8 \text{ cm}$   
 $|FE| = 1 \text{ cm}$

Yukarıdaki verilere göre,  $|BC| = x$  kaç cm'dir?

- A) 10 B) 12 C) 15 D) 18 E) 21

$$\frac{12}{20} = \frac{9}{x} \Rightarrow x = 15$$

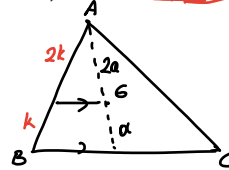
4.



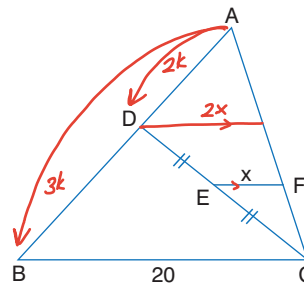
$[AB] \perp [BC]$   
 BEGD dikdörtgen  
 $|AD| = 6 \text{ cm}$   
 $|EC| = 8 \text{ cm}$

Yukarıdaki verilere göre,  $|AC| = x$  kaç cm'dir?

- A) 13 B) 15 C) 17 D) 20 E) 25



5.



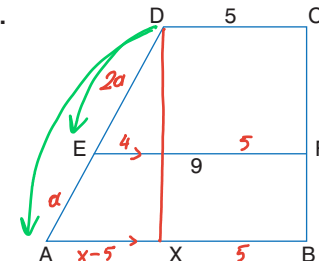
ABC üçgen  
 D, E, C doğrusal  
 $[EF] \parallel [BC]$   
 $3|AD| = 2|BD|$   
 $|DE| = |EC|$   
 $|BC| = 20 \text{ cm}$

Yukarıdaki verilere göre,  $|EF| = x$  kaç cm'dir?

- A) 8 B) 6 C) 5 D) 4 E) 3

$$\frac{2k}{5k} = \frac{2x}{20} \Rightarrow x = 4$$

6.



ABCD dörtgen  
 $[AB] \parallel [EF] \parallel [DC]$   
 $|ED| = 2|AE|$   
 $|DC| = 5 \text{ cm}$   
 $|EF| = 9 \text{ cm}$

Yukarıdaki verilere göre,  $|AB| = x$  kaç cm'dir?

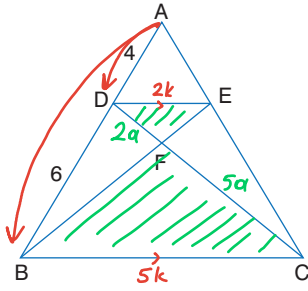
- A) 15 B) 14 C) 13 D) 12 E) 11

$$\frac{2a}{3a} = \frac{4}{x-5}$$

$$2x - 10 = 12$$

$$x = 11$$

7.

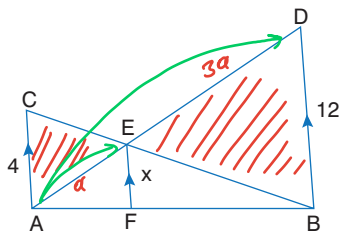


ABC üçgen  
 $[CD] \cap [BE] = \{F\}$   
 $[DE] \parallel [BC]$   
 $|AD| = 4 \text{ cm}$   
 $|BD| = 6 \text{ cm}$   
 $\frac{4}{10} = \frac{2}{5}$

Yukarıdaki verilere göre,  $\frac{|DF|}{|FC|}$  oranı kaçtır?

- A)  $\frac{2}{3}$  B)  $\frac{1}{2}$  C)  $\frac{2}{5}$  D)  $\frac{1}{3}$  E)  $\frac{2}{7}$

8.



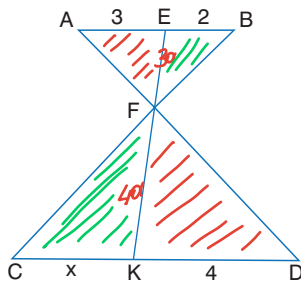
ABC ve ABD  
 üçgen  
 $[AC] \parallel [EF] \parallel [BD]$   
 $|AC| = 4 \text{ cm}$   
 $|BD| = 12 \text{ cm}$

Yukarıdaki verilere göre,  $|EF| = x$  kaç cm'dir?

- A)  $\frac{3}{2}$  B) 2 C)  $\frac{5}{2}$  D) 3 E)  $\frac{7}{2}$

$$\frac{\alpha}{4\alpha} = \frac{x}{12} \quad x=3$$

9.



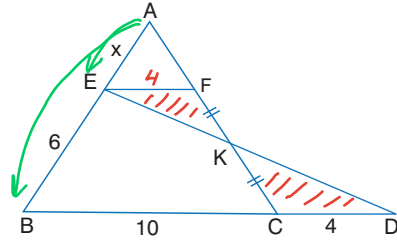
$[AD] \cap [BC] \cap [EK] = \{F\}$   
 $[AB] \parallel [CD]$   
 $|AE| = 3 \text{ cm}$   
 $|BE| = 2 \text{ cm}$   
 $|DK| = 4 \text{ cm}$

Yukarıdaki verilere göre,  $|CK| = x$  kaç cm'dir?

- A)  $\frac{8}{3}$  B)  $\frac{3}{2}$  C)  $\frac{5}{2}$  D) 3 E) 6

$$\frac{2}{x} = \frac{3\alpha}{4\alpha} \quad x = \frac{8}{3}$$

10.



ABC üçgen  
 $[EF] \parallel [BD]$   
 E, K, D doğrusal  
 $|FK| = |KC|$   
 $|BC| = 10 \text{ cm}$   
 $|DC| = 4 \text{ cm}$   
 $|BE| = 6 \text{ cm}$

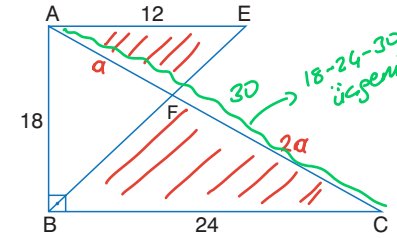
$$\frac{x}{x+6} = \frac{4}{10} \quad 10x = 4x + 24$$

$$6x = 24 \quad x = 4$$

Yukarıdaki verilere göre,  $|AE| = x$  kaç cm'dir?

- A) 2 B) 3 C) 4 D) 6 E) 9

11.



$[AB] \perp [BC]$   
 $[AE] \parallel [BC]$   
 $|AE| = 12 \text{ cm}$   
 $|BC| = 24 \text{ cm}$   
 $|AB| = 18 \text{ cm}$

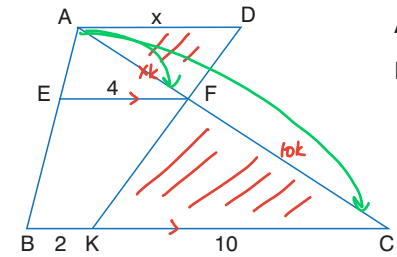
Yukarıdaki verilere göre,  $|FC|$  kaç cm'dir?

- A) 10 B) 12 C) 15 D) 18 E) 20

$$3\alpha = 30 \quad \alpha = 10$$

$$|FC| = 2\alpha = 20$$

12.



ABC üçgen  
 D, F, K doğrusal  
 $|EF| = 4 \text{ cm}$   
 $|BK| = 2 \text{ cm}$   
 $|KC| = 10 \text{ cm}$

$[AD] \parallel [EF] \parallel [BC]$

Yukarıdaki verilere göre,  $|AD| = x$  kaç cm'dir?

- A) 5 B) 5,5 C) 6 D) 6,5 E) 8

$$\frac{xk}{(x+10)k} = \frac{4}{12} \quad x = 5$$