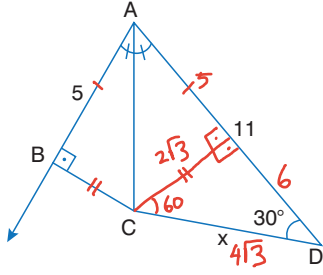


1.



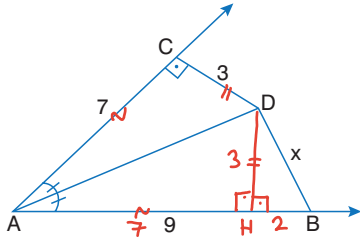
[AC]  $\widehat{BAD}$ 'nin  
açıortayıdır  
[CB]  $\perp$  [AB]  
 $m(\widehat{ADC})=30^\circ$   
|AB|=5 cm  
|AD|=11 cm

Yukarıdaki verilere göre, |DC|=x kaç cm'dir?

- A)  $2\sqrt{3}$  B) 6 C)  $4\sqrt{3}$  D) 9 E) 12

$60^\circ$ 'nin karşısı 6 ise  
 $30^\circ$ 'nin karşısı  $2\sqrt{3}$  tür.

2.



[AD]  $\widehat{CAB}$ 'nin  
açıortayıdır  
[DC]  $\perp$  [AC]  
|AC|=7 cm  
|CD|=3 cm  
|AB|=9 cm

Yukarıdaki verilere göre, |BD|=x kaç cm'dir?

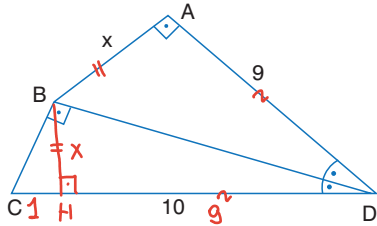
- A)  $2\sqrt{3}$  B)  $\sqrt{13}$  C)  $\sqrt{15}$  D) 4 E)  $2\sqrt{5}$

$$x^2 = 2^2 + 3^2$$

$$x^2 = 13$$

$$x = \sqrt{13}$$

3.



[DB] açıortay  
[AB]  $\perp$  [AD]  
[BC]  $\perp$  [BD]  
|AD|=9 cm  
|DC|=10 cm

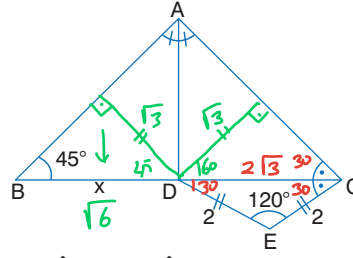
Yukarıdaki verilere göre, |AB|=x kaç cm'dir?

- A) 3 B) 4 C) 5 D)  $4\sqrt{2}$  E) 6

$$h^2 = p \cdot k \Rightarrow x^2 = 1 \cdot 9$$

$$x = 3$$

4.



[AD] açıortay  
 $m(\widehat{ABC})=45^\circ$   
 $m(\widehat{DCE})=120^\circ$

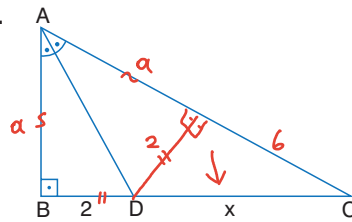
$m(\widehat{ACB})=m(\widehat{BCE})$

|DE|=|EC|=2 cm

Yukarıdaki verilere göre, |BD|=x kaç cm'dir?

- A)  $\sqrt{3}$  B)  $\sqrt{6}$  C)  $2\sqrt{2}$  D)  $2\sqrt{3}$  E)  $3\sqrt{2}$

5.



ABC dik üçgen  
[AD] açıortay  
[AB]  $\perp$  [BC]  
|AC|=|AB|+6 cm  
|BD|=2 cm

Yukarıdaki verilere göre, |DC|=x kaç cm'dir?

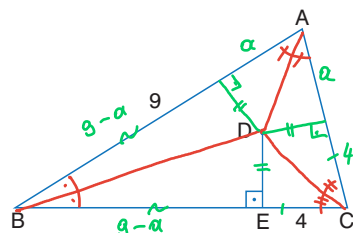
- A) 5 B)  $4\sqrt{2}$  C)  $2\sqrt{10}$  D)  $3\sqrt{5}$  E)  $4\sqrt{3}$

$$x^2 = 2^2 + 6^2$$

$$x^2 = 40$$

$$x = 2\sqrt{10}$$

6.



D,  $\widehat{ABC}$ 'nin  
iç açıortaylarının  
kesişim noktasıdır  
[DE]  $\perp$  [BC]  
|AB|=9 cm  
|EC|=4 cm

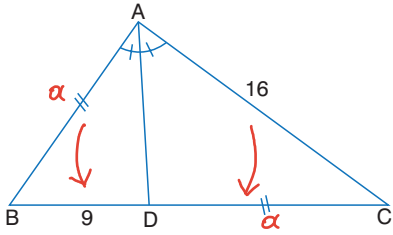
Yukarıdaki verilere göre,  $\widehat{ABC}$  kaç cm'dir?

- A) 30 B) 29 C) 28 D) 27 E) 26

$$G = 9 + 13 - a + 4 + a$$

$$G = 26$$

7.



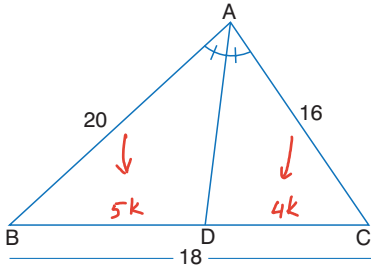
[AD]  $\widehat{ABC}$ 'nin  
açıortayı  
 $|AB| = |DC|$   
 $|BD| = 9$  cm  
 $|AC| = 16$  cm

Yukarıdaki verilere göre,  $\widehat{C(ABC)}$  kaç cm'dir?

- A) 44 B) 45 C) 47 D) 48 **E) 49**

1)  $\frac{a}{9} = \frac{16}{a}$  2)  $G = 12 + 21 + 16$   
 $a^2 = 144$   $G = 49$   
 $a = 12$

8.



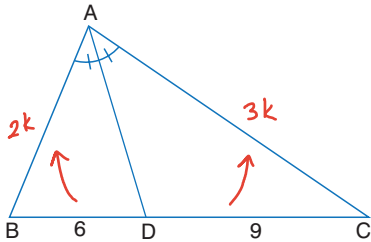
[AD],  $\widehat{ABC}$ 'nin  
açıortayı  
 $|AB| = 20$  cm  
 $|AC| = 16$  cm  
 $|BC| = 18$  cm

Yukarıdaki verilere göre,  $|BD|$  kaç cm'dir?

- A) 8 B) 9 **C) 10** D) 12 E) 15

$9k = 18$   $|BD| = 5k = 5 \cdot 2 = 10$   
 $k = 2$

9.



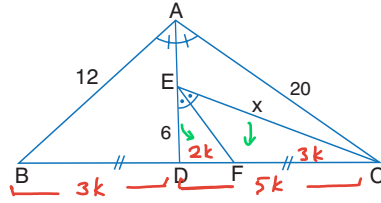
[AD],  $\widehat{ABC}$ 'nin  
açıortayı  
 $|BD| = 6$  cm  
 $|DC| = 9$  cm

ABC üçgeninin çevresi 35 cm olduğuna göre,  $|AB|$  kaç cm'dir?

- A) 8** B) 9 C) 10 D) 12 E) 15

$5k + 15 = 35$   $|AB| = 2k \Rightarrow 2 \cdot 4 = 8$   
 $5k = 20$   
 $k = 4$

10.



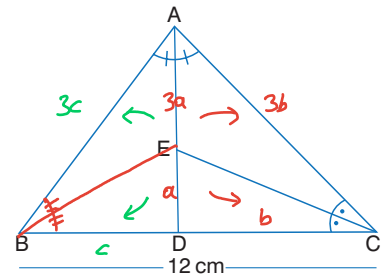
ABC üçgen  
[AD] ve [EF]  
açıortay  
 $|BD| = |FC|$   
 $|AB| = 12$  cm  
 $|AC| = 20$  cm  
 $|DE| = 6$  cm

Yukarıdaki verilere göre,  $|EC| = x$  kaç cm'dir?

- A) 18 B) 15 C) 12 **D) 9** E) 8

$\frac{6}{2k} = \frac{x}{3k}$   $2x = 18$   
 $x = 9$

11.



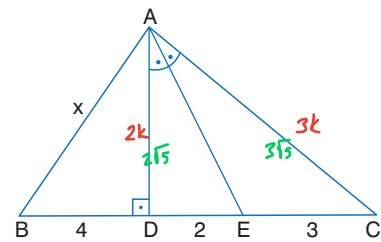
ABC üçgen  
[AD] ve [CE]  
açıortay  
 $\frac{|AE|}{3a} = 3 \frac{|ED|}{a}$   
 $|BC| = 12$  cm

Yukarıdaki verilere göre,  $\widehat{C(ABC)}$  kaç cm'dir?

- A) 24 B) 30 C) 36 D) 40 **E) 48**

$b + c = 12$   
 $G(ABC) = 4b + 4c = 4(b + c) = 4 \cdot 12 = 48$

12.



ABC üçgen  
[AD]  $\perp$  [BC]  
 $|BD| = 4$  cm  
 $|DE| = 2$  cm  
 $|EC| = 3$  cm

$m(\widehat{DAE}) = m(\widehat{EAC})$

Yukarıdaki verilere göre,  $|AB| = x$  kaç cm'dir?

- A) 5 B)  $4\sqrt{2}$  **C) 6** D)  $4\sqrt{3}$  E) 8

1)  $(3k)^2 = (2k)^2 + 5^2$  2)  $x^2 = 4^2 + 2\sqrt{5}^2$   
 $k = \sqrt{5}$   $x^2 = 16 + 20$   
 $x = 6$