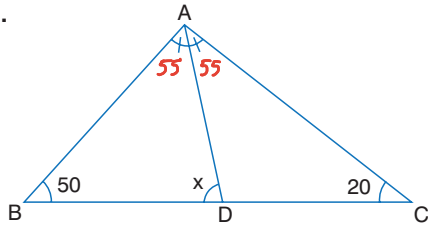


1.



ABC üçgen  
[AD] açıortay  
 $m(\widehat{ABC})=50^\circ$   
 $m(\widehat{ACB})=20^\circ$

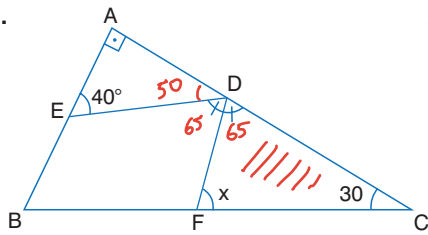
Yukarıdaki verilere göre,  $m(\widehat{ADB})=x$  kaç derecedir?

- A) 65 B) 70 C) 75 D) 80 E) 85

1)  $A+B+C=180$   
 $A+50+20=180$   
 $A=110$

2)  $x=20+55$   
 $x=75$  } iki iç bir dış

2.



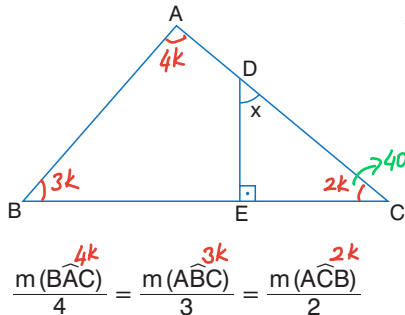
ABC dik üçgen  
[DF] açıortay  
 $m(\widehat{AED})=40^\circ$   
 $m(\widehat{ACB})=30^\circ$

Yukarıdaki verilere göre,  $m(\widehat{DFC})=x$  kaç derecedir?

- A) 65 B) 70 C) 75 D) 80 E) 85

$x+65+30=180$   
 $x=85$

3.



ABC üçgen  
[DE]  $\perp$  [BC]

Yukarıdaki verilere göre,  $m(\widehat{EDC})=x$  kaç derecedir?

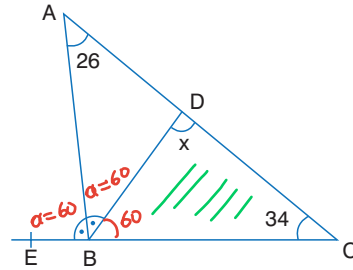
- A) 30 B) 40 C) 45 D) 50 E) 60

$\frac{m(\widehat{BAC})}{4} = \frac{m(\widehat{ABC})}{3} = \frac{m(\widehat{ACB})}{2}$

1)  $4k+3k+2k=180$   
 $9k=180$   
 $k=20$

2)  $90+40+x=180$   
 $x=50$

4.



ABC üçgen  
[AB] açıortay  
 $m(\widehat{BAC})=26^\circ$   
 $m(\widehat{ACE})=34^\circ$

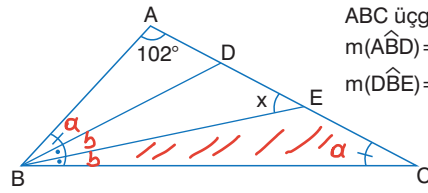
Yukarıdaki verilere göre,  $m(\widehat{BDC})=x$  kaç derecedir?

- A) 74 B) 80 C) 86 D) 90 E) 94

1)  $\alpha=26+34$   
 $\alpha=60$  } iki iç bir dış

2)  $x+60+34=180$   
 $x+94=180$   
 $x=86$

5.



ABC üçgen  
 $m(\widehat{ABD})=m(\widehat{ACB})$   
 $m(\widehat{DBE})=m(\widehat{EBC})$

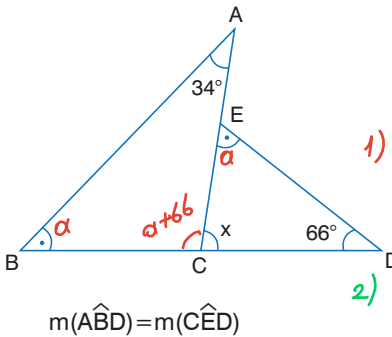
Yukarıdaki şekilde  $m(\widehat{BAC})=102^\circ$  olduğuna göre,  $m(\widehat{AEB})=x$  kaç derecedir?

- A) 35 B) 39 C) 42 D) 48 E) 51

$2\alpha+2b+102=180$   
 $2\alpha+2b=78$   
 $\alpha+b=39$

$x=\alpha+b$  } iki iç bir dış  
 $x=39$

6.



$m(\widehat{BAC})=34^\circ$   
 $m(\widehat{BDE})=66^\circ$

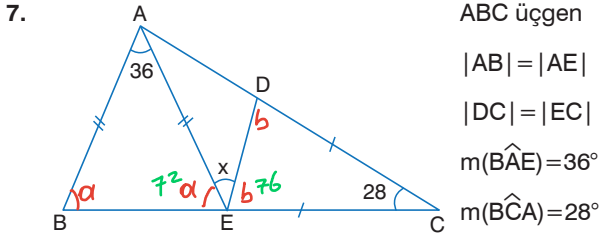
1)  $\alpha+34+\alpha+66=180$   
 $2\alpha=80$   
 $\alpha=40$

$m(\widehat{ABD})=m(\widehat{CED})$

2)  $x+\alpha+66=180$   
 $x+40+66=180$   
 $x=74$

Yukarıdaki verilere göre,  $m(\widehat{ECD})=x$  kaç derecedir?

- A) 40 B) 44 C) 56 D) 60 E) 74

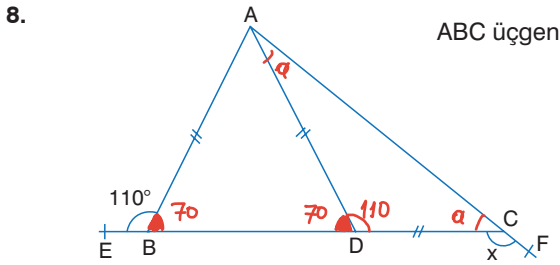


ABC üçgen  
 $|AB| = |AE|$   
 $|DC| = |EC|$   
 $m(\widehat{BAE}) = 36^\circ$   
 $m(\widehat{BCA}) = 28^\circ$

Yukarıdaki verilere göre,  $m(\widehat{AED}) = x$  kaçtır?

- A) 32 B) 34 C) 36 D) 28 E) 40

1)  $2\alpha + 32 = 180$     2)  $28 + 2b = 180$   
 $\alpha = 72$                        $b = 76$   
 3)  $\alpha + b + x = 180$   
 $72 + 76 + x = 180$      $x = 32$



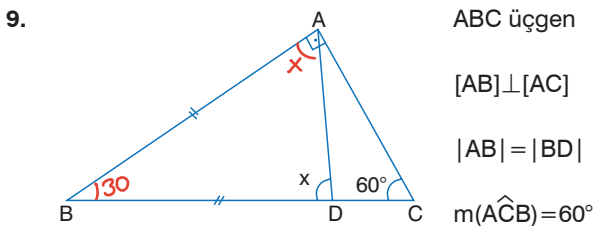
ABC üçgen

$|AB| = |AD| = |DC|$   
 $m(\widehat{ABE}) = 110^\circ$   
 $m(\widehat{ECF}) = x$

Yukarıdaki verilere göre,  $x$  kaçtır?

- A) 125 B) 130 C) 135 D) 140 E) 145

1)  $2\alpha + 110 = 180$     2)  $\alpha + x = 180$   
 $\alpha = 35$                        $35 + x = 180$   
 $x = 145$



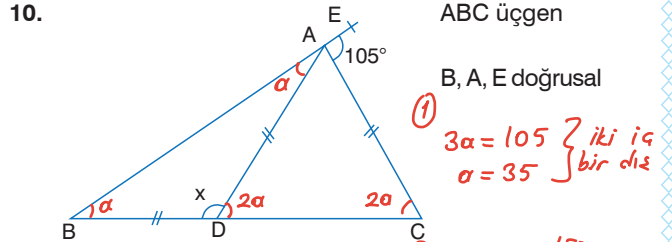
ABC üçgen

$[AB] \perp [AC]$   
 $|AB| = |BD|$   
 $m(\widehat{ACB}) = 60^\circ$

Yukarıdaki verilere göre,  $m(\widehat{ADB}) = x$  kaç derecedir?

- A) 65 B) 70 C) 75 D) 80 E) 85

$2x + 30 = 180$   
 $2x = 150$   
 $x = 75$



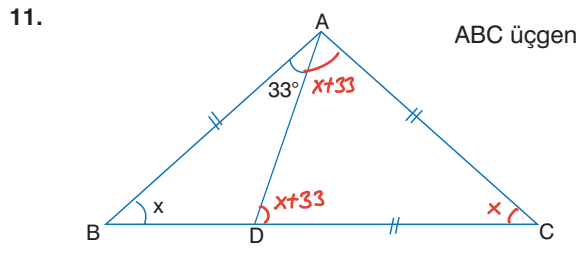
ABC üçgen  
 B, A, E doğrusal

1)  $3\alpha = 105$  } iki iç  
 $\alpha = 35$  } bir dış  
 2)  $x + 2\alpha = 180$   
 $x + 70 = 180$   
 $x = 110$

$|AD| = |AC| = |BD|$   
 $m(\widehat{CAE}) = 105^\circ$

Yukarıdaki verilere göre,  $m(\widehat{ADB}) = x$  kaçtır?

- A) 100 B) 105 C) 110 D) 115 E) 120



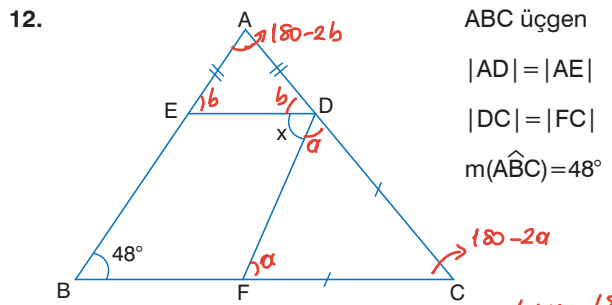
ABC üçgen

$|AB| = |AC| = |DC|$   
 $m(\widehat{BAD}) = 33^\circ$

$3x + 66 = 180$   
 $3x = 114$   
 $x = 38$

Yukarıdaki verilere göre,  $m(\widehat{ABC}) = x$  kaçtır?

- A) 35 B) 38 C) 42 D) 45 E) 47



ABC üçgen

$|AD| = |AE|$   
 $|DC| = |FC|$   
 $m(\widehat{ABC}) = 48^\circ$

1)  $180 - 2\alpha + 180 - 2b + 48 = 180$   
 $\alpha + b = 114$     2)  $\alpha + b + x = 180$   
 $114 + x = 180$   
 $x = 66$

Yukarıdaki verilere göre,  $m(\widehat{EDF}) = x$  kaçtır?

- A) 66 B) 68 C) 72 D) 74 E) 80