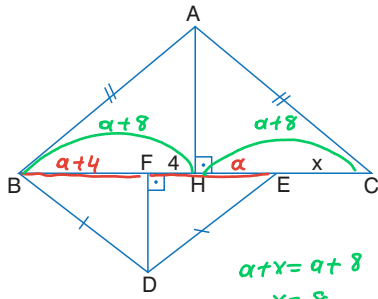


İKİZKENAR-EŞKENAR ÜÇGEN

KONU KAVRAMA

TEST NO: 1

1.

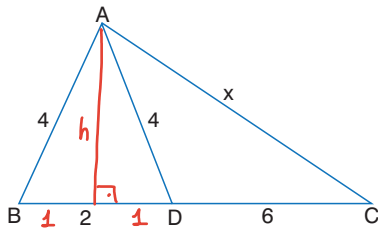


ABC ve BDE
ikizkenar üçgen
 $|AB| = |AC|$
 $|BD| = |DE|$
 $[AH] \perp [BC]$
 $[DF] \perp [BE]$
 $|FH| = 4 \text{ cm}$

Yukarıdaki verilere göre, $|EC| = x$ kaç cm'dir?

- A) 4 B) 5 C) $4\sqrt{2}$ D) $4\sqrt{3}$ E) 8

2.



ABC üçgen
 $|BD| = 2 \text{ cm}$
 $|DC| = 6 \text{ cm}$

$|AB| = |AD| = 4 \text{ cm}$

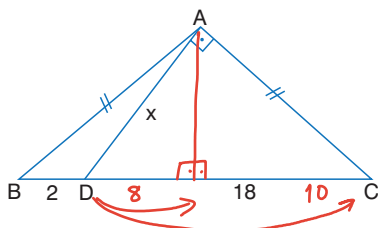
Yukarıdaki verilere göre, $|AC| = x$ kaç cm'dir?

- A) $4\sqrt{3}$ B) 7 C) $6\sqrt{2}$ D) 8 E) $6\sqrt{3}$

1) $4^2 = 1^2 + h^2$
 $h = \sqrt{15}$

2) $x^2 = 7^2 + h^2$
 $x^2 = 49 + 15$
 $x^2 = 64$
 $x = 8$

3.



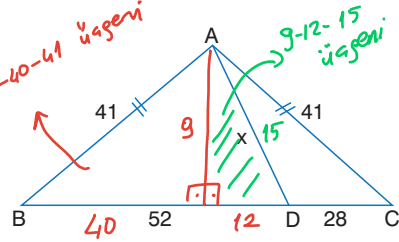
ABC üçgen
 $[AD] \perp [AC]$
 $|AB| = |AC|$
 $|BD| = 2 \text{ cm}$
 $|DC| = 18 \text{ cm}$

Yukarıdaki verilere göre, $|AD| = x$ kaç cm'dir?

- A) 15 B) 12 C) $10\sqrt{2}$ D) 10 E) $4\sqrt{5}$

$x^2 = 8 \cdot 18$
 $x = 12$

4.

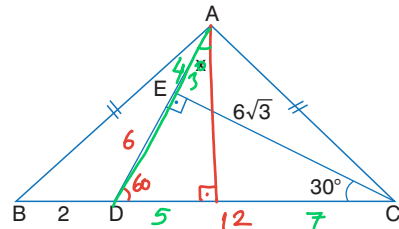


$|AB| = |AC| = 41 \text{ cm}$

Yukarıdaki verilere göre, $|AD| = x$ kaç cm'dir?

- A) 10 B) 13 C) 15 D) 17 E) 20

5.

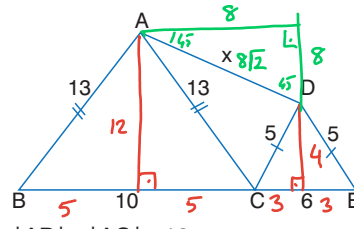


ABC üçgen
 $[CE] \perp [AD]$
 $m(\widehat{BCE}) = 30^\circ$
 $|AB| = |AC|$
 $|BD| = 2 \text{ cm}$
 $|EC| = 6\sqrt{3} \text{ cm}$

Yukarıdaki verilere göre, $|AE| = x$ kaç cm'dir?

- A) 3 B) $2\sqrt{3}$ C) 4 D) 5 E) $3\sqrt{3}$

6.



$|AB| = |AC| = 13 \text{ cm}$
 $|DC| = |DE| = 5 \text{ cm}$

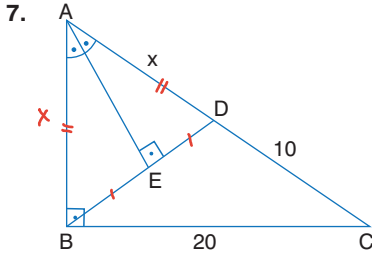
B, C, E doğrusal
 $|BC| = 10 \text{ cm}$
 $|EC| = 6 \text{ cm}$

Yukarıdaki verilere göre, $|AD| = x$ kaç cm'dir?

- A) $6\sqrt{2}$ B) $4\sqrt{5}$ C) 10 D) 12 E) $8\sqrt{2}$

1-E 2-D 3-B

4-C 5-C 6-E

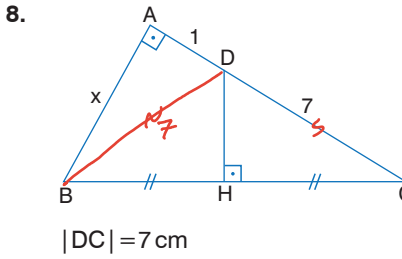


ABC dik üçgen
 $[AE] \perp [BD]$
 $m(\widehat{BAE}) = m(\widehat{EAD})$
 $|BC| = 20 \text{ cm}$
 $|DC| = 10 \text{ cm}$

Yukarıdaki verilere göre, $|AD| = x$ kaç cm'dir?

- A) 10 **B) 15** C) 20 D) 25 E) 30

$(x+10)^2 = x^2 + 20^2$
 $x = 15$

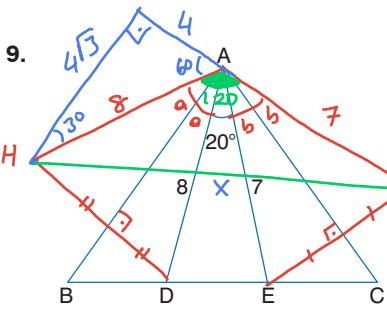


ABC üçgen
 $[AB] \perp [AC]$
 $[DH] \perp [BC]$
 $|BH| = |HC|$
 $|AD| = 1 \text{ cm}$
 $|DC| = 7 \text{ cm}$

Yukarıdaki verilere göre, $|AB| = x$ kaç cm'dir?

- A) 5 B) 6 C) $2\sqrt{10}$ D) $3\sqrt{5}$ **E) $4\sqrt{3}$**

$7^2 = x^2 + 1^2$
 $49 = x^2 + 1$
 $48 = x^2$
 $4\sqrt{3} = x$



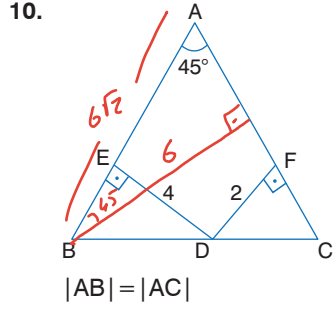
ABC üçgen
 $m(\widehat{BAC}) = 70^\circ$
 $m(\widehat{DAE}) = 20^\circ$
 $|AD| = 8 \text{ cm}$
 $|AE| = 7 \text{ cm}$
 $a+b=50$ ise
 $m(\widehat{HAT}) = 120^\circ$ dir.

D'nin AB'ye göre simetriği H, E'nin AC'ye E'nin AC'ye göre simetriği T olduğuna göre, $|HT|$ kaç cm'dir?

- A) 13** B) 15 C) 17 D) 20 E) 25

$x^2 = 4\sqrt{3}^2 + 11^2$
 $x = 13$

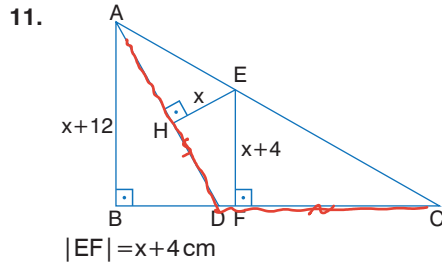
7-B | 8-E | 9-A



ABC üçgen
 $[DE] \perp [AB]$
 $[DF] \perp [AC]$
 $m(\widehat{BAC}) = 45^\circ$
 $|ED| = 4 \text{ cm}$
 $|DF| = 2 \text{ cm}$
 $|AB| = |AC|$

Yukarıdaki verilere göre, $|AB| = |AC|$ kaç cm'dir?

- A) $4\sqrt{2}$ B) 6 C) $5\sqrt{2}$ **D) $6\sqrt{2}$** E) 12

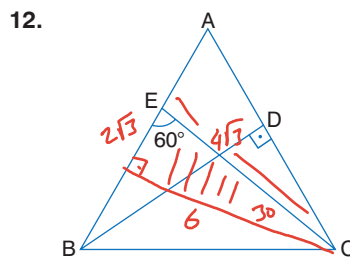


ABC dik üçgen
 $[EH] \perp [AD]$
 $[EF] \perp [DC]$
 $|AD| = |DC|$
 $|EH| = x \text{ cm}$
 $|EF| = x+4 \text{ cm}$

Yukarıdaki verilere göre, x kaçtır?

- A) 5 B) 6 C) 7 **D) 8** E) 9

$x + x + 4 = x + 12$
 $x = 8$



ABC ikizkenar üçgen
 $|AB| = |AC|$
 $[BD] \perp [AC]$
 $m(\widehat{BEC}) = 60^\circ$
 $|BD| = 6 \text{ cm}$

Yukarıdaki verilere göre, $|EC|$ kaç cm'dir?

- A) 6 **B) $4\sqrt{3}$** C) $6\sqrt{3}$ D) 12 E) $8\sqrt{3}$

10-D | 11-D | 12-B