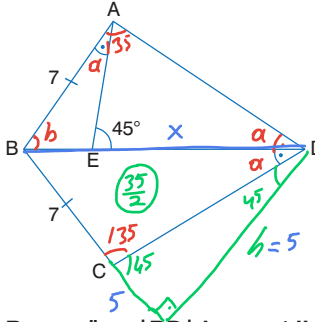


7.



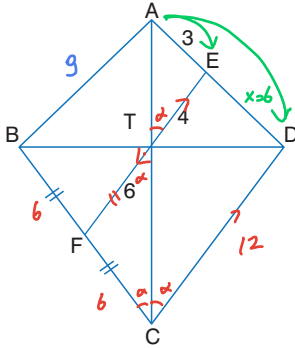
ABCD deltoid
 $m(\widehat{AED})=45^\circ$
 $m(\widehat{BAE})=m(\widehat{BDC})$
 $A(ABCD)=35 \text{ cm}^2$
 $|AB|=|BC|=7 \text{ cm}$
 $a+b=45^\circ$ ise
 $m(\widehat{BAC})=135^\circ$ dir.

Buna göre, $|BD|$ kaç cm'dir?

- A) 10 B) 13 C) 15 D) 17 E) 20

$\frac{7 \cdot h}{2} = \frac{35}{2}$
 $h=5$
 $x^2 = 5^2 + 12^2$
 $x=13$

8.



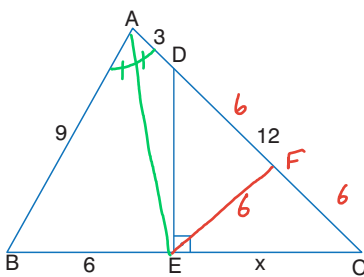
ABCD deltoid
 $[AC] \perp [BD] \cap [EF] = \{T\}$
 $|AE|=3 \text{ cm}$
 $|TE|=4 \text{ cm}$
 $|BF|=|FC|$
 $\frac{3}{3+x} = \frac{4}{12}$
 $3=3+x$
 $x=6$

Buna göre, $\angle(ABCD)$ kaç cm'dir?

- A) 36 B) 39 C) 42 D) 45 E) 48

$C = 3+9+12+12 = 42$

9.



ABC üçgen
 $[DE] \perp [BC]$
 $|AB|=9 \text{ cm}$
 $|AD|=3 \text{ cm}$
 $|DC|=12 \text{ cm}$
 $|BE|=6 \text{ cm}$

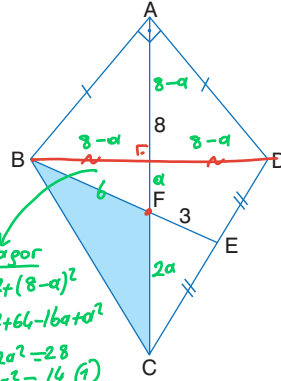
Buna göre, $|EC|=x$ kaç cm'dir?

- A) 6 B) 7 C) 8 D) 9 E) 10

ABEF deltoid

$\frac{9}{6} = \frac{15}{x}$
 $x=10$

10.



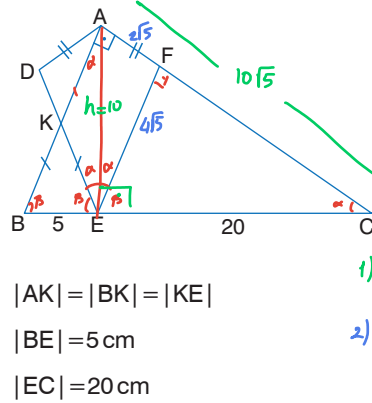
ABCD deltoid
 $[AB] \perp [AD]$
 $|AB|=|AD|$
 $|DE|=|EC|$
 $|AF|=8 \text{ cm}$
 $|FE|=3 \text{ cm}$
 F , ağırlık merkezidir.

Buna göre, taralı alan kaç cm^2 'dir?

- A) 8 B) 10 C) 12 D) 14 E) 16

Taralı Alan $\Rightarrow \frac{2a \cdot (8-a)}{2} = 8a - a^2$
 $\Rightarrow 14$

11.

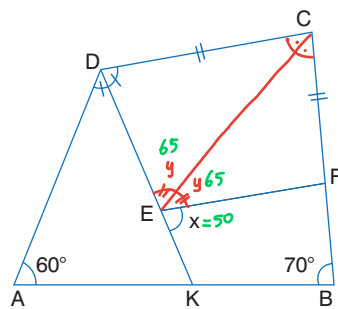


ABCD üçgen
ADEF deltoid
 $[AB] \perp [AC]$
 $[AB] \parallel [EF]$
 $|AD|=|AF|$
 $1) h^2 = 5 \cdot 20 \quad h=10$
 $2) A_{\text{taralı}} = \frac{2 \cdot 5 \cdot 4 \cdot 5}{2} \times 2 = 40$

Buna göre, $A(ADEF)$ kaç cm^2 'dir?

- A) 40 B) 45 C) 50 D) 55 E) 60

12.



ABCD dörtgen
CDEF deltoid
 $[DK]$ açıortay
 $|DC|=|CF|$
 $m(\widehat{DAB})=60^\circ$
 $m(\widehat{ABC})=70^\circ$
 $y = \frac{60+70}{2}$
 $y=65$

Buna göre, $m(\widehat{FEK})$ kaçtır?

- A) 40 B) 50 C) 60 D) 70 E) 80