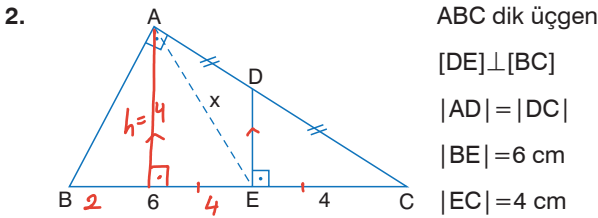


Yukarıdaki verilere göre, |EC| = x kaç cm'dir?

- A) 4 B) 5 C) 2√10 D) 3√5 E) 4√3

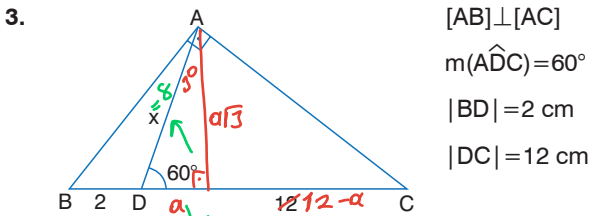
$$\begin{aligned} 49 &= a^2 + x^2 + b^2 \\ -/ \quad 24 &= a^2 + b^2 \\ \hline 25 &= x^2 \\ 5 &= x \end{aligned}$$



Yukarıdaki verilere göre, |AE| = x kaç cm'dir?

- A) 2√5 B) 5 C) 4√2 D) 6 E) 4√3

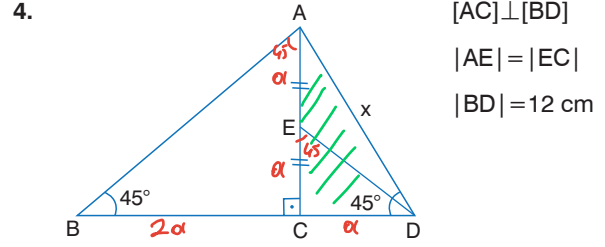
$$\begin{aligned} 1) \quad h^2 &= p \cdot k \\ h^2 &= 2 \cdot 8 \\ h &= 4 \\ 2) \quad x^2 &= 4^2 + 4^2 \\ x &= 4\sqrt{2} \end{aligned}$$



Yukarıdaki verilere göre, |AD| = x kaç cm'dir?

- A) 5 B) 6 C) 7 D) 8 E) 9

$$\begin{aligned} 1) \quad h^2 &= p \cdot k \\ (a\sqrt{3})^2 &= (2+a) \cdot (12-a) \quad a=4 \\ 2) \quad 30^\circ &\rightarrow 4 \text{ ise} \\ 90^\circ &\rightarrow 8 \text{ dir.} \end{aligned}$$

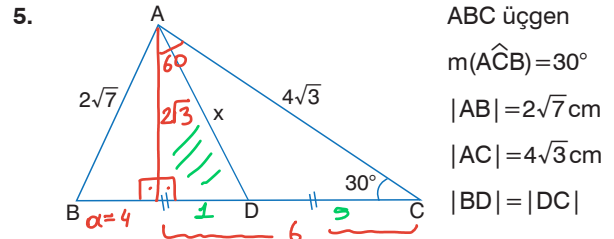


m(∠ABD) = m(∠BDE) = 45°

Yukarıdaki verilere göre, |AD| = x kaç cm'dir?

- A) 5 B) 4√3 C) 6 D) 8 E) 4√5

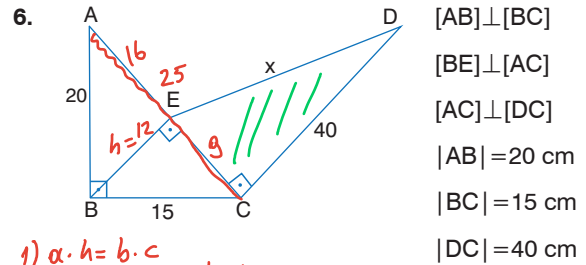
$$\begin{aligned} 1) \quad 3\alpha &= 12 \\ \alpha &= 4 \\ 2) \quad x^2 &= \alpha^2 + (2\alpha)^2 \\ x^2 &= 4^2 + 8^2 \\ x &= 4\sqrt{5} \end{aligned}$$



Yukarıdaki verilere göre, |AD| = kaç cm'dir?

- A) 2√3 B) √13 C) √14 D) √15 E) 4

$$\begin{aligned} 1) \quad 2\sqrt{7}^2 &= a^2 + 2\sqrt{3}^2 \\ 28 &= a^2 + 12 \\ 16 &= a^2 \\ 4 &= a \\ 2) \quad x^2 &= 1^2 + 2\sqrt{3}^2 \\ x^2 &= 13 \\ x &= \sqrt{13} \end{aligned}$$



$$\begin{aligned} 1) \quad \alpha \cdot h &= b \cdot c \\ 25 \cdot h &= 15 \cdot 20 \quad h=12 \end{aligned}$$

Yukarıdaki verilere göre, |ED| = x kaç cm'dir?

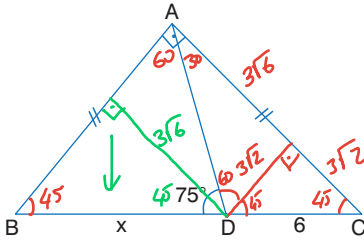
- A) 41 B) 45 C) 48 D) 50 E) 52

$$\begin{aligned} 2) \quad x^2 &= 9^2 + 40^2 \\ x &= 41 \end{aligned}$$

1-B 2-C 3-D

4-E 5-B 6-A

7.



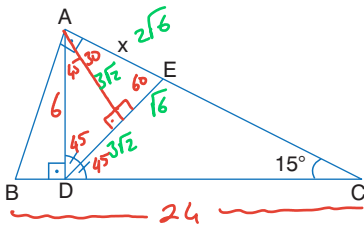
ABC üçgen
 $[AB] \perp [AC]$
 $|AB| = |AC|$
 $m(\widehat{ADB}) = 75^\circ$
 $|DC| = 6$ cm

Yukarıdaki verilere göre, $|BD| = x$ kaç cm'dir?

- A) 8 B) $6\sqrt{2}$ C) 9 **D) $6\sqrt{3}$** E) 12

$45^\circ \rightarrow 3\sqrt{6}$ ise
 $90^\circ \rightarrow 6\sqrt{3}$

8.

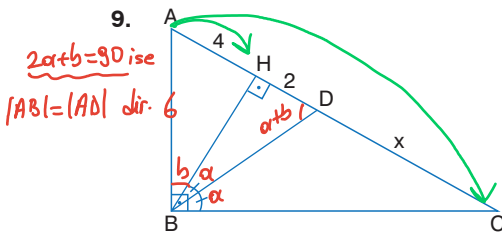


ABC dik üçgen
 $[AB] \perp [AC]$
 $[AD] \perp [BC]$
 $[DE]$ açıortay
 $m(\widehat{ACB}) = 15^\circ$
 $|BC| = 24$ cm

Yukarıdaki verilere göre, $|AE| = x$ kaç cm'dir?

- A) $3\sqrt{2}$ **B) $2\sqrt{6}$** C) 5 D) $4\sqrt{2}$ E) 6

9.



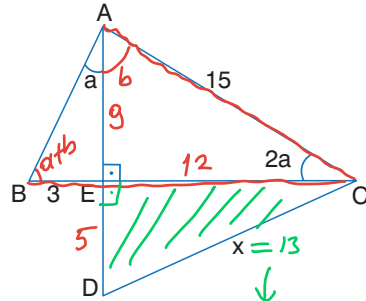
ABC dik üçgen
 $[AB] \perp [BC]$
 $[BH] \perp [AC]$
 $m(\widehat{HBD}) = m(\widehat{DBC})$
 $|AH| = 4$ cm
 $|HD| = 2$ cm

Yukarıdaki verilere göre, $|DC| = x$ kaç cm'dir?

- A) 3** B) $2\sqrt{3}$ C) 4 D) $3\sqrt{2}$ E) 5

$6^2 = 4 \cdot (6+x)$
 $36 = 4 \cdot (6+x)$ $x = 3$

10.



ABC ve ADC
 birer üçgen
 $[AD] \perp [BC]$
 $|AC| = 15$ cm
 $|BC| = 3$ cm
 $|AD| = 14$ cm

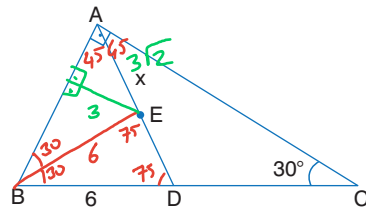
$m(\widehat{ACB}) = 2m(\widehat{BAD})$

Yukarıdaki verilere göre, $|DC| = x$ kaç cm'dir?

- A) $6\sqrt{3}$ B) 12 **C) 13** D) $6\sqrt{5}$ E) 15

$2\alpha + b = 90$ ise $\widehat{B} = \alpha + b$ dir ve $|AC| = |BC|$ olur.

11.

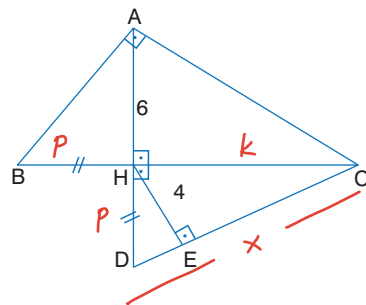


E, \widehat{ABC} 'nin iç teğet çemberin merkezi
 $m(\widehat{ACD}) = 30^\circ$
 $|BD| = 6$ cm

Yukarıdaki verilere göre, $|AE| = x$ kaç cm'dir?

- A) 3 B) $2\sqrt{3}$ C) 4 **D) $3\sqrt{2}$** E) 5

12.



$[AB] \perp [AC]$
 $[AD] \perp [BC]$
 $[HE] \perp [DC]$
 $|AH| = 6$ cm
 $|HE| = 4$ cm

Yukarıdaki verilere göre, $|DC|$ kaç cm'dir?

- A) $2\sqrt{6}$ B) 5 C) $4\sqrt{2}$ D) 8 **E) 9**

1) $h^2 = p \cdot k$
 $36 = p \cdot k$
 2) $\alpha \cdot h = b - c$
 $x \cdot 4 = p - k$
 $x \cdot 4 = 36$ $x = 9$