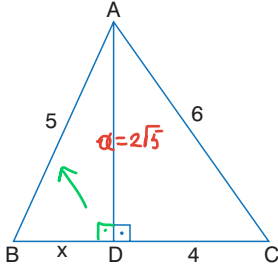


1.

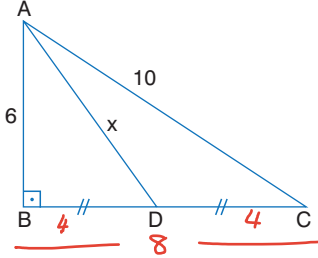


ABC üçgen
 $[AD] \perp [BC]$
 $|AB| = 5$ cm
 $|AC| = 6$ cm
 $|DC| = 4$ cm

Yukarıdaki verilere göre, $|BD| = x$ kaç cm'dir?

- A) $\sqrt{5}$ B) 3 C) $2\sqrt{3}$ D) 4 E) $2\sqrt{5}$
- 1) $6^2 = 4^2 + \alpha^2$ $\alpha = 2\sqrt{5}$
 2) $5^2 = x^2 + 2\sqrt{5}^2$
 $x^2 = 5$ $x = \sqrt{5}$

2.

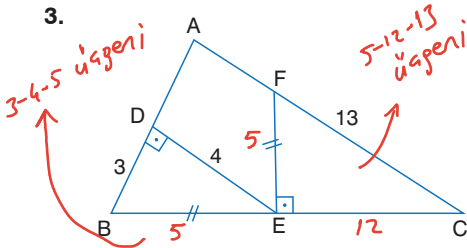


ABC dik üçgen
 $[AB] \perp [BC]$
 $|BD| = |DC|$
 $|AB| = 6$ cm
 $|AC| = 10$ cm

Yukarıdaki verilere göre, $|AD| = x$ kaç cm'dir?

- A) 8 B) $2\sqrt{13}$ C) $6\sqrt{3}$ D) 12 E) $6\sqrt{5}$
- $x^2 = 4^2 + 6^2$
 $x^2 = 52$
 $x = 2\sqrt{13}$

3.

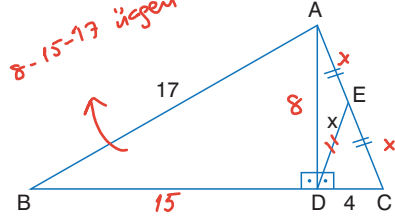


ABC üçgen
 $[EF] \perp [BC]$
 $[ED] \perp [AB]$
 $|BD| = 3$ cm
 $|DE| = 4$ cm
 $|FC| = 13$ cm

Yukarıdaki şekilde $|BE| = |EF|$ olduğuna göre, $|BC|$ uzunluğu kaç cm'dir?

- A) 12 B) 15 C) 17 D) 20 E) 21

4.

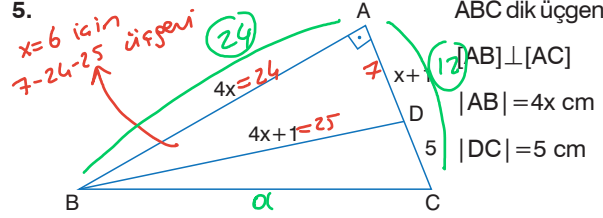


ABC üçgen
 $[AD] \perp [BC]$
 $[AE] = [EC]$
 $|AB| = 17$ cm
 $|BD| = 15$ cm
 $|DC| = 4$ cm

Yukarıdaki verilere göre, $|DE| = x$ kaç cm'dir?

- A) 2 B) $2\sqrt{3}$ C) $3\sqrt{2}$ D) $2\sqrt{5}$ E) 5
- $(2x)^2 = 4^2 + 8^2$
 $4x^2 = 80$
 $x^2 = 20$ $x = 2\sqrt{5}$

5.



ABC dik üçgen
 $[AB] \perp [AC]$
 $|AB| = 4x$ cm
 $|DC| = 5$ cm

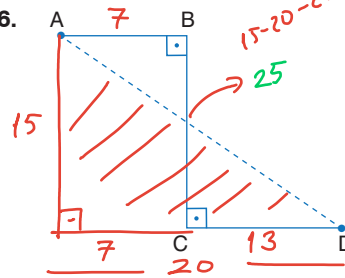
$|AD| = x+1$ cm
 $|BD| = 4x+1$ cm

$\alpha^2 = 12^2 + 24^2$
 $\alpha = 12\sqrt{5}$

Yukarıdaki verilere göre, $|BC|$ kaç cm'dir?

- A) $12\sqrt{3}$ B) 30 C) 24 D) 20 E) $12\sqrt{5}$

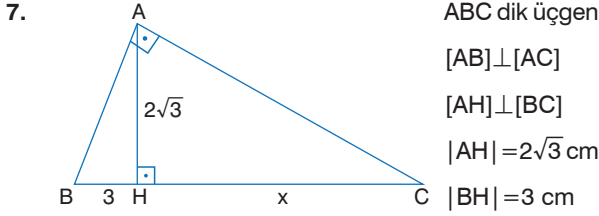
6.



$[AB] \perp [BC]$
 $[BC] \perp [CD]$
 $|AB| = 7$ cm
 $|CD| = 13$ cm
 $|BC| = 15$ cm

Yukarıdaki verilere göre, $|AD|$ kaç cm'dir?

- A) 17 B) 20 C) 25 D) 30 E) 36



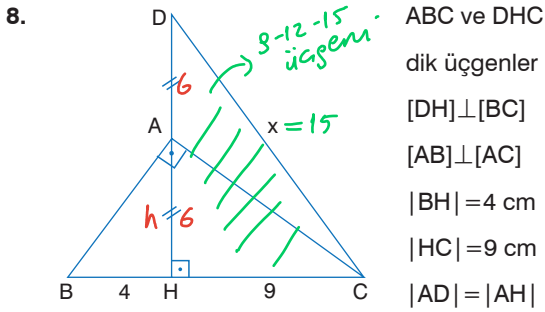
Yukarıdaki verilere göre, $|HC| = x$ kaç cm'dir?

- A) 2 B) 3 C) 4 D) 6 E) 9

Öklit Bağıntısı

$$h^2 = p \cdot k \Rightarrow 2\sqrt{3}^2 = 3 \cdot x$$

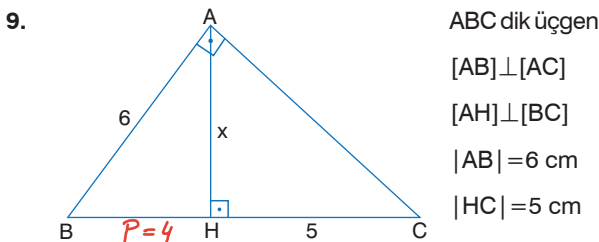
$$12 = 3 \cdot x \quad x = 4$$



Yukarıdaki verilere göre, $|DC| = x$ kaç cm'dir?

- A) $9\sqrt{3}$ B) 15 C) $9\sqrt{5}$ D) 18 E) $3\sqrt{13}$

1) $h^2 = p \cdot k$
 $h^2 = 4 \cdot 9$
 $h = 6$

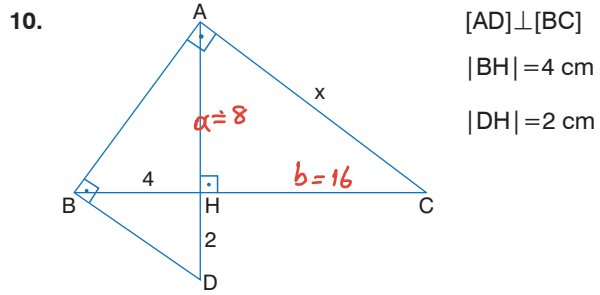


Yukarıdaki verilere göre, $|AH| = x$ kaç cm'dir?

- A) 4 B) $3\sqrt{2}$ C) $2\sqrt{5}$ D) $2\sqrt{6}$ E) $3\sqrt{3}$

1) $6^2 = p \cdot (p+5)$ 2) $h^2 = p \cdot k$
 $p = 4$ $x^2 = 4 \cdot 5 \quad x = 2\sqrt{5}$

7-C | 8-B | 9-C

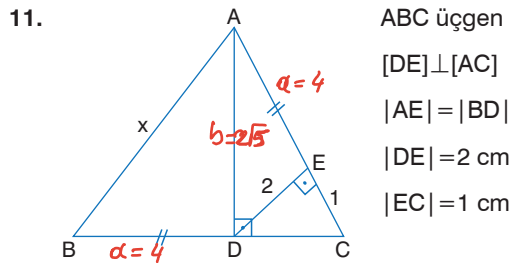


$$m(\widehat{BAC}) = m(\widehat{ABD}) = 90^\circ$$

Yukarıdaki verilere göre, $|AC| = x$ kaç cm'dir?

- A) 10 B) $8\sqrt{3}$ C) 15 D) 17 E) $8\sqrt{5}$

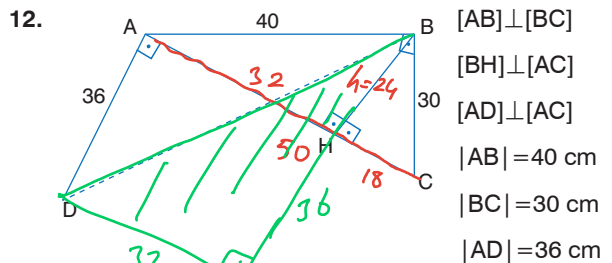
1) $h^2 = p \cdot k$ 2) $h^2 = p \cdot k$ 3) $x^2 = 8^2 + 16^2$
 $4^2 = 2 \cdot a$ $8^2 = 4 \cdot b$ $x = 8\sqrt{5}$
 $a = 8$ $b = 16$



Yukarıdaki verilere göre, $|AB| = x$ kaç cm'dir?

- A) $2\sqrt{5}$ B) 5 C) $2\sqrt{7}$ D) 6 E) $4\sqrt{3}$

1) $h^2 = p \cdot k$ 2) $b^2 = 2^2 + 4^2$ 3) $x^2 = 4^2 + 2\sqrt{5}^2$
 $2^2 = 1 \cdot a$ $b = 2\sqrt{5}$ $x^2 = 16 + 20$
 $4 = a$ $x = 6$



Yukarıdaki verilere göre, $|BD|$ kaç cm'dir?

- A) 60 B) 68 C) 72 D) 80 E) 84

1) $a \cdot h = b \cdot c$ 2) $32 - 60 - 84$ üçgeni
 $50 \cdot h = 30 \cdot 4$ $|BD| = 84$
 $h = 24$

10-E | 11-D | 12-B